

BOP, CHOKE MANIFOLD AND DIVERTER SCHEMATICS

OCEAN ENDEAVOR BOP STACK

SCHAFFER "FT-G"

RISER ADAPTER

c/w Boost Line Isolation/Test Valve
3" 10M Failsafe Open + Check Valve

OIL STATES 3.5K

FLEX JOINT

10 DEG MAX DEFLECTION

HYDRIL 10M GX ANNULAR

GAS BLEED VALVES

CAMERON

3 1/16" 15M Dual Block
Failsafe Close

HYDRIL 10M GX ANNULAR

CHOKE & KILL ISOLATION VALVES

CAMERON

3 1/16" 15M Failsafe Open

CAMERON LMRP CONNECTOR

HC COLLET 18 3/4" X 10,000 psi
4,048M Bending @ 0 psi, 0 tension
2,063M Bending @ 10Mpsi, 2MM tension
Max Release Angle $\leq 30^\circ$

BLIND SHEAR

22" Bonnet

HYDRIL 15M

DOUBLE RAMS

CHOKE AND KILL VALVES

CAMERON 3 1/16" 15M Dual Block

Failsafe Close

VARIABLE 4 1/2" x 7"

15.5" Bonnet

VARIABLE 4 1/2" x 7"

15.5" Bonnet

HYDRIL 15M

DOUBLE RAMS

VARIABLE 4 1/2" x 7"

15.5" Bonnet

Temp/Pressure Probe

0-20,000 psi

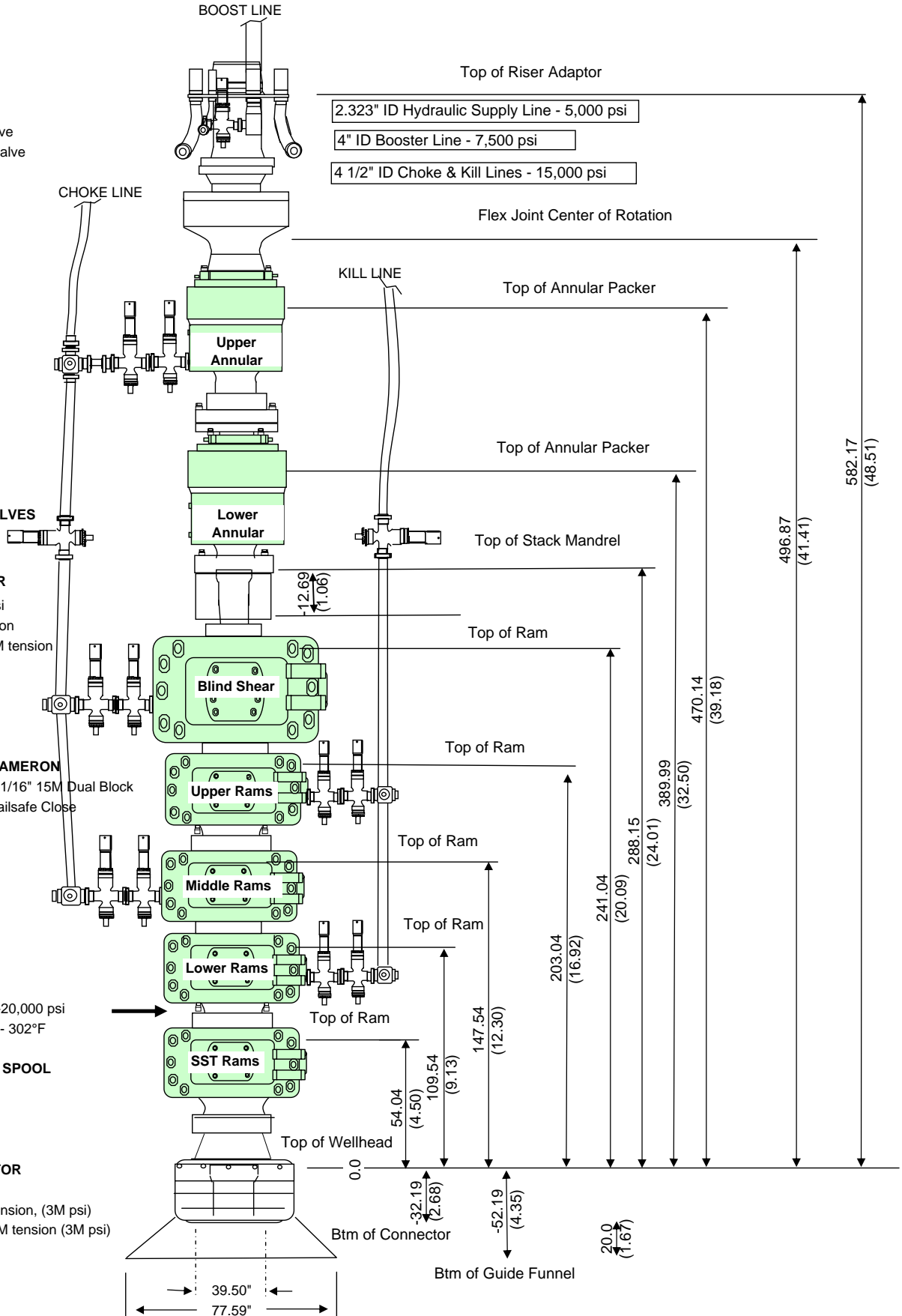
0 - 302°F

HYDRIL 15M SINGLE SR TEST SPOOL

VARIABLE 4 1/2" x 7"

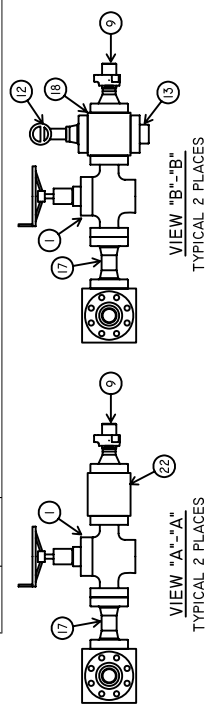
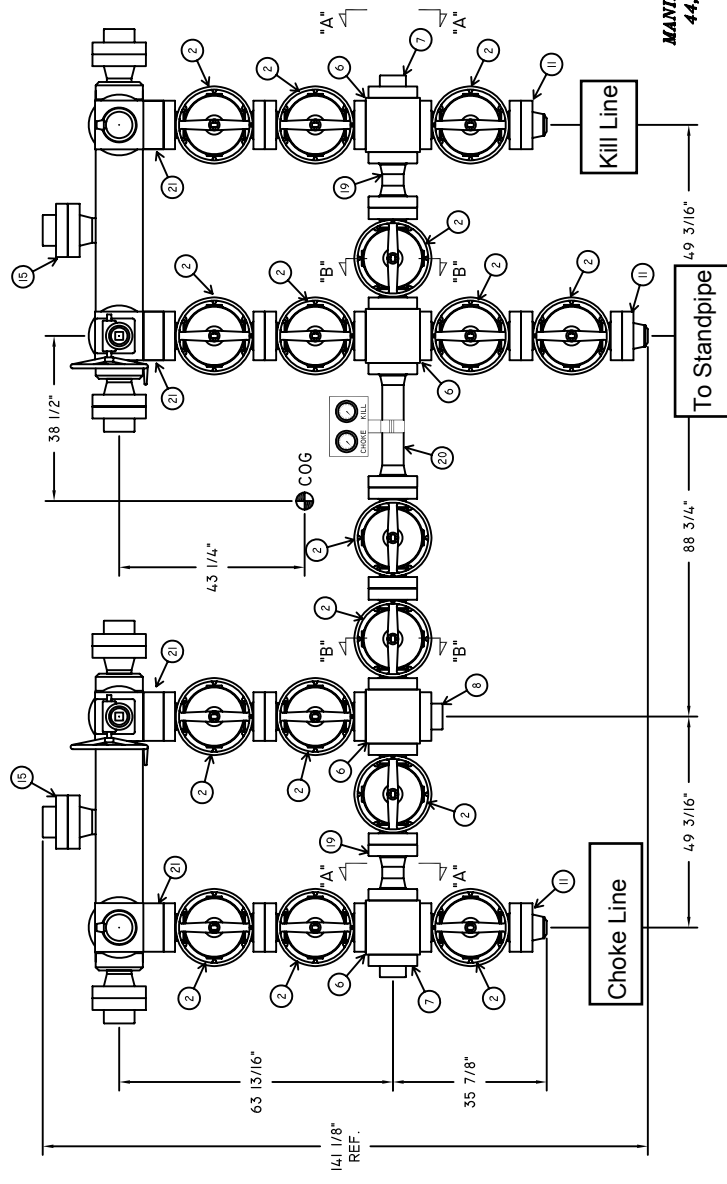
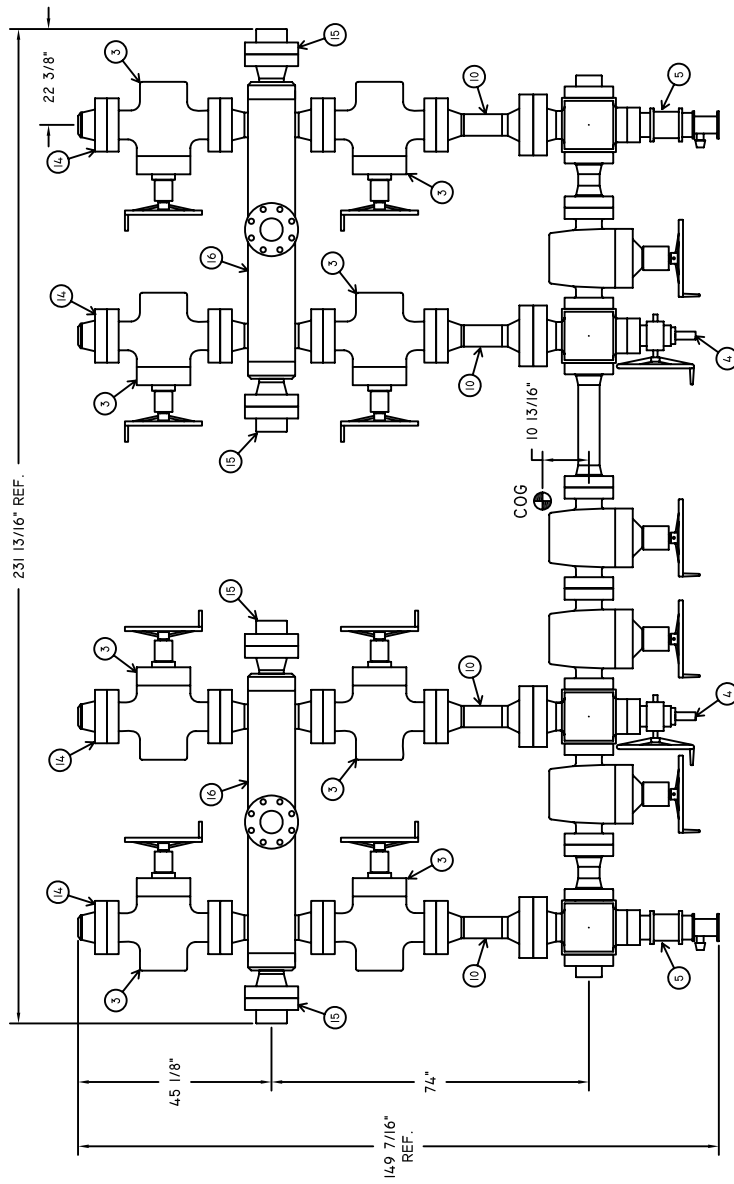
VETCO WELLHEAD CONNECTOR

DW-HD-H4 18 3/4" x 15,000 psi
6,250M Bending @ 15M psi, 0 tension, (3M psi)
5,250M Bending @ 15M psi, 1MM tension (3M psi)



ALL MEASUREMENTS ARE TAKEN FROM THE TOP OF THE RAM BLOCKS (RAM BLOCK THICKNESS = 10.78 INCH) OR TOP OF ANNULAR ELEMENT (ELEMENT THICKNESS = 22", PISTON STROKE = 11.5") MEASUREMENTS ARE IN INCHES (FEET).

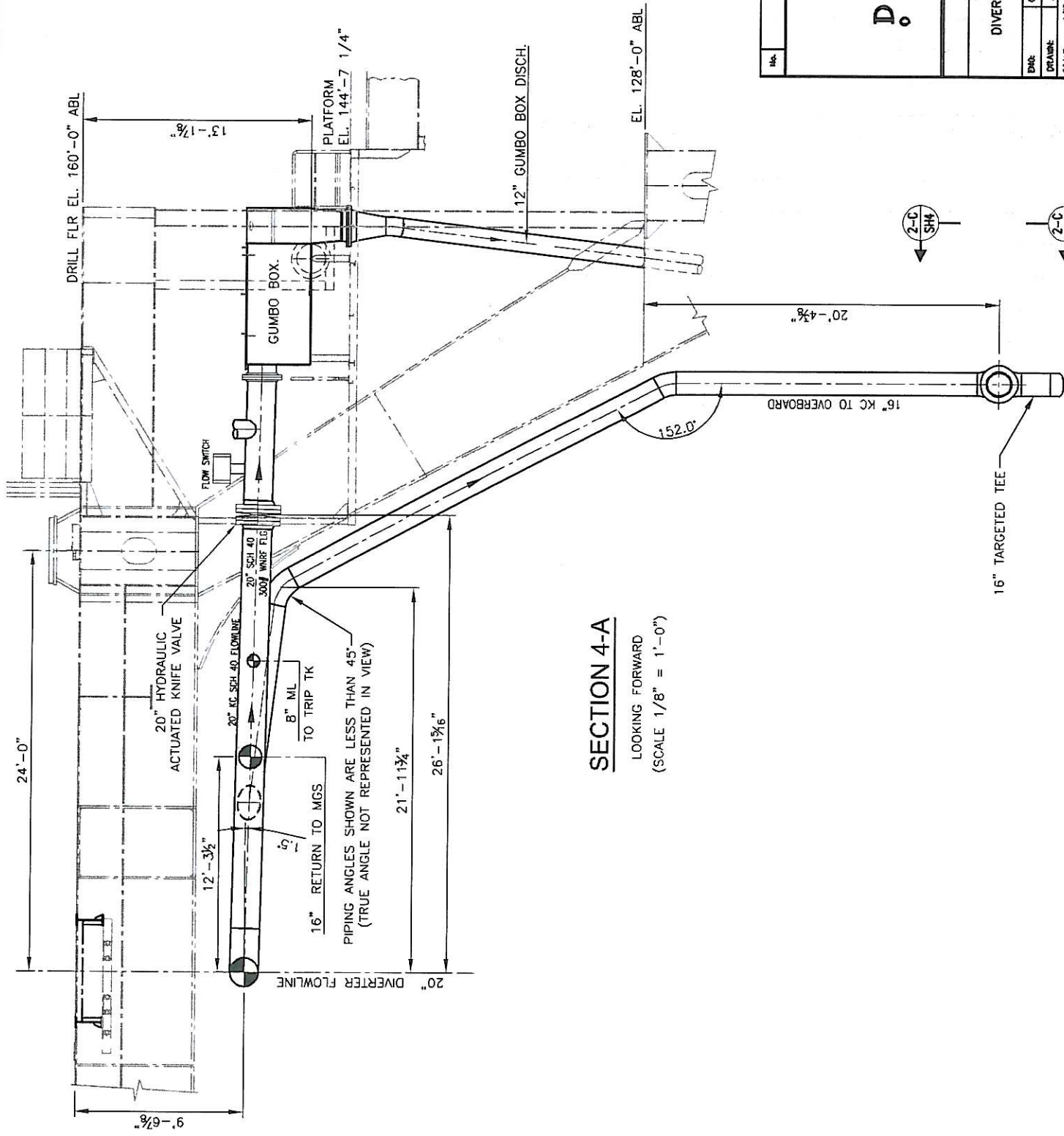
ITEM	QTY	DESCRIPTION
1	4	GATE VALVE, 2 1/16"-15,000 PSI WP, MANUAL
2	16	GATE VALVE, 3 1/16"-15,000 PSI WP, MANUAL
3	8	GATE VALVE, 4 1/16"-10,000 PSI WP, MANUAL
4	1	HYDRAULIC DRILLING CHOKE SYSTEM, DUAL
5	2	MANUAL CHOKE, 3 1/16"-15M INLET x 4 1/16"-15M OUTLET
6	4	STUDDED CROSS, 1) 2 1/16" x 4) 3 1/16"-15,000 PSI WP
7	2	TARGET FLANGE, 3 1/16"-15,000 PSI WP
8	1	BLIND FLANGE, 3 1/16"-15,000 PSI WP
9	4	ADAPTER FLANGE, 2 1/16"-15M x 2" #2202 UNION w/ TEST PLUG
10	4	ADAPTER SPOOL, 4 1/16"-15M x 4 1/16"-10M, 22 5/8" LG.
11	3	WELDNECK FLANGE, 3 1/16"-15M w/ 5" OD x 3" ID PREP
12	2	PRESSURE GAUGE, 2 1/16"-15M FLG. x 0-15M
13	2	BLIND FLANGE, 2 1/16"-15,000 PSI WP
14	4	WELDNECK FLANGE, 4 1/16"-10M w/ 6" XXH PREP
15	6	TARGET FLANGE, 4 1/16"-10,000 PSI WP
16	2	BUFFER TANK, 7) 4 1/16"-10M INLET/OUTLET CONNECTIONS
17	4	SPACER SPOOL, 2 1/16"-15,000 PSI WP, 12" LG.
18	2	STUDDED CROSS, 2 1/16"-15,000 PSI WP
19	2	SPACER SPOOL, 3 1/16"-15,000 PSI WP, 13" LG.
20	1	SPACER SPOOL, 3 1/16"-15,000 PSI WP, 29" LG.
21	4	SPACER FLANGE, 3 1/16"-15,000 PSI WP, 4 3/4" LG.
22	2	STUDDED TEE, 2 1/16"-15,000 PSI WP
23	1	HEAVY DUTY OILFIELD SKID (NOT SHOWN)
24	144	STUD, 7/8"-9UNC x 4 3/8" LG.
25	32	STUD, 7/8"-9UNC x 6 1/4" LG.
26	128	STUD, 1 1/8"-8UN x 5 3/8" LG.
27	96	STUD, 1 1/8"-8UN x 8" LG.
28	176	STUD, 1 1/8"-8UN x 8 3/8" LG.
29	32	STUD, 1 1/8"-8UN x 10 1/8" LG.
30	32	STUD, 1 3/8"-8UN x 9 1/2" LG.
31	208	NUT, 7/8"-9UNC
32	704	NUT, 1 1/8"-8UN
33	64	NUT, 1 3/8"-8UN
34	24	RING GASKET, BX-152
35	36	RING GASKET, BX-154
36	26	RING GASKET, BX-155



DIAMOND OFFSHORE

RIG: OCEAN ENDEAVOR
P.O. NO.: 126-016582
DESC.: CHOKE/KILL MANIFOLD
DATE: MARCH 15, 2005
DWG. NO.: OENDMAN-0905
REVISION: A


MANIFOLD ASSEMBLY WEIGHT:
44,750 LBS. (INCL. SKID)



SECTION 4-A

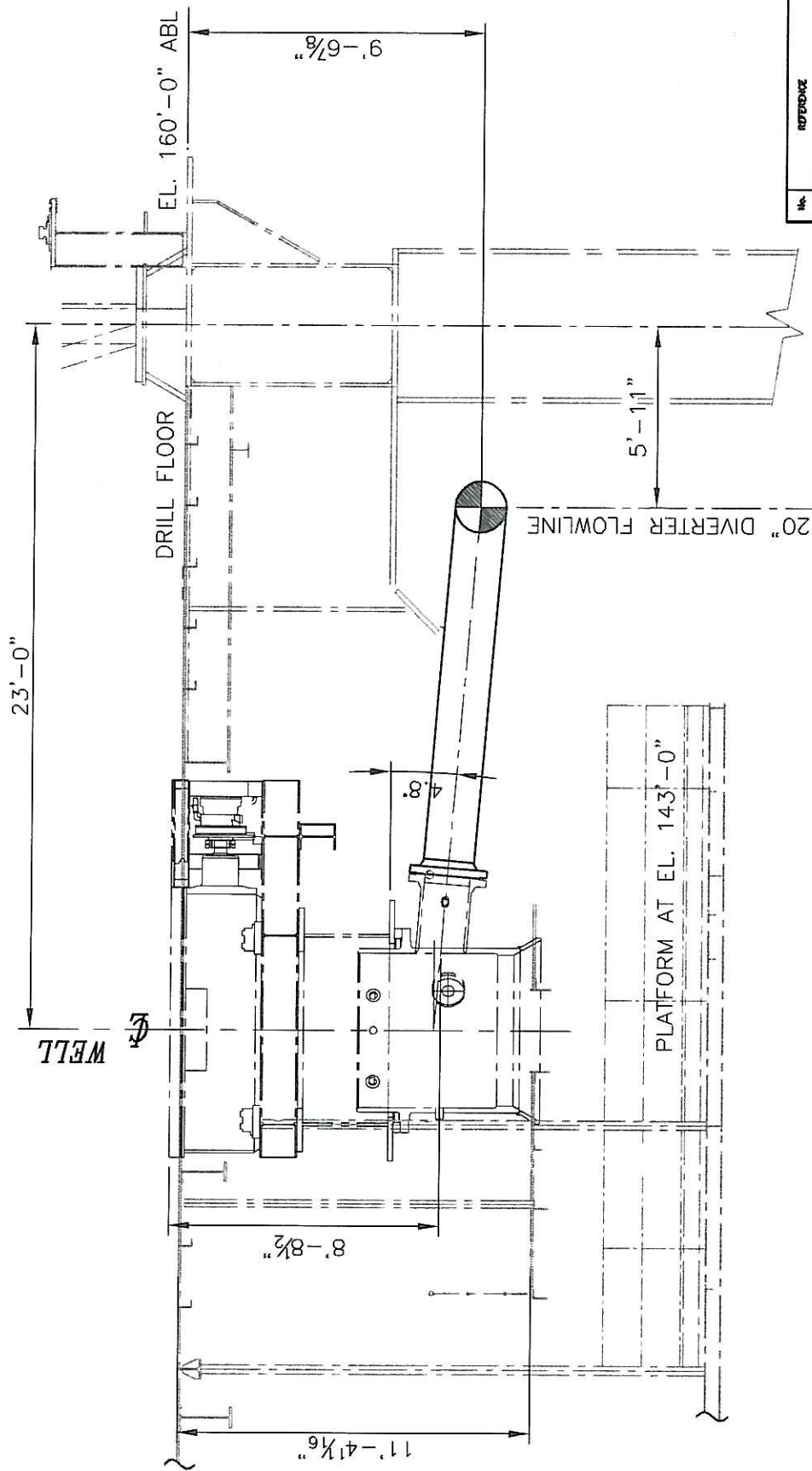
LOOKING FORWARD
(SCALE 1/8" = 1'-0")

REFERENCE		DRAWING NO.	
NO.		DATE	REV. #
		1/8" = 1'-0"	0
DATE: 4/19/07		SHEET 2 OF 4	



DIAMOND
OFFSHORE
P O BOX 4558
HOUSTON, TEXAS 77210

OCEAN ENDEAVOR	
DIVERTER PIPING ARRANGEMENT	
DWG NO.	126-PD-006
DATE	126-PD-006
APPROVED	126-PD-006
SCALE	1/8" = 1'-0"
DATE	4/19/07
SHEET	2 OF 4
REV. #	0

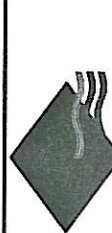


SECTION 1-A

LOOKING TO PORT
SCALE 3/16" = 1'-0"

FWD

No.	REFERENCE	DETAILS No.
-----	-----------	-------------



DIAMOND
OFFSHORE
P O BOX 4558
HOUSTON, TEXAS 77210

OCEAN ENDEAVOR

DIVERTER PIPING ARRANGEMENT

DATE	4/19/07	REV. #	0
DRAWN	AS NOTED	SCALE	126x0008x0
CHECKED	126-PD-006	ACAD NAME	
APPROVED			

